

# KEN IQ10

Malone Hospital Services Pty Ltd.  
24 Tathra Street West Gosford, 2250, NSW  
Phone: +61 (02) 4323 9731  
[sales@malones.com.au](mailto:sales@malones.com.au)  
[www.malones.com.au](http://www.malones.com.au)



# Key Features

- Available in four different size
- Chamber SS AISI 316 and external structure even electrical panel SS AISI 304
- Horizontal oscillating nozzles on the walls
- Tilted floor (for faster water drainage)
- Double tempered sliding glass door
- Forced air drying system including HEPA H14 filter
- Independent service area (left or right side)
- Low noise level



# Dimensions

## 1. IQ10

- H: 2790 mm
- W: 2540 mm
- L: 2770 mm

## 2. IQ10-W

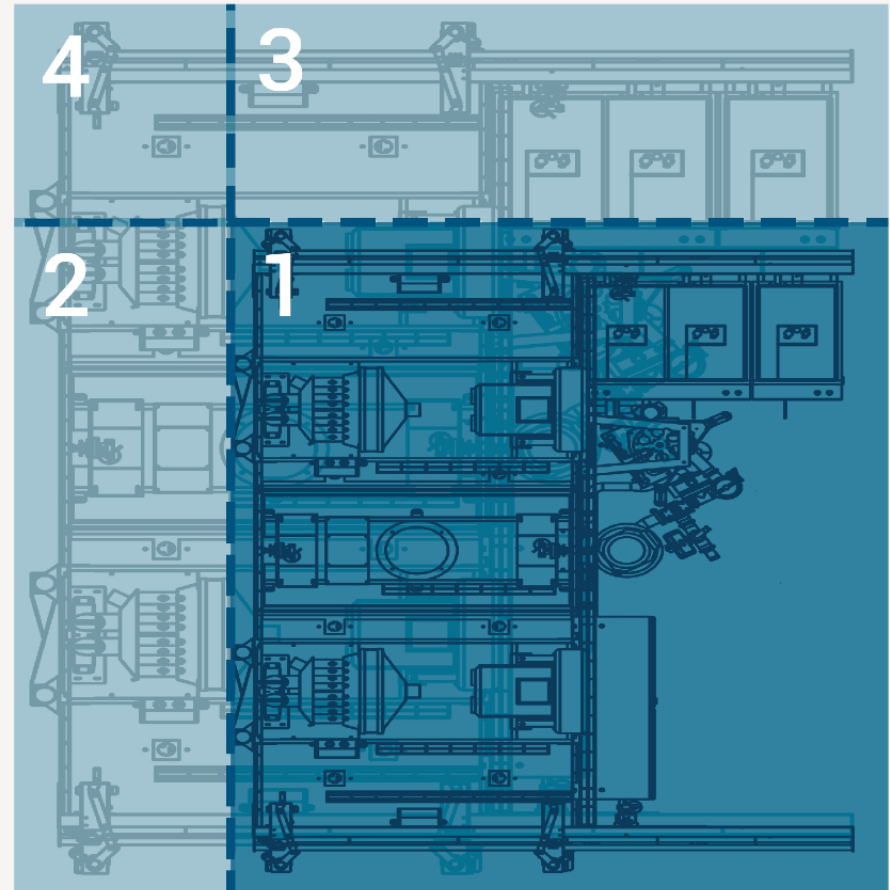
- H: 2790 mm
- W: 2940 mm
- L: 2770 mm

## 3. IQ10-L

- H: 2790 mm
- W: 2540 mm
- L: 3520 mm

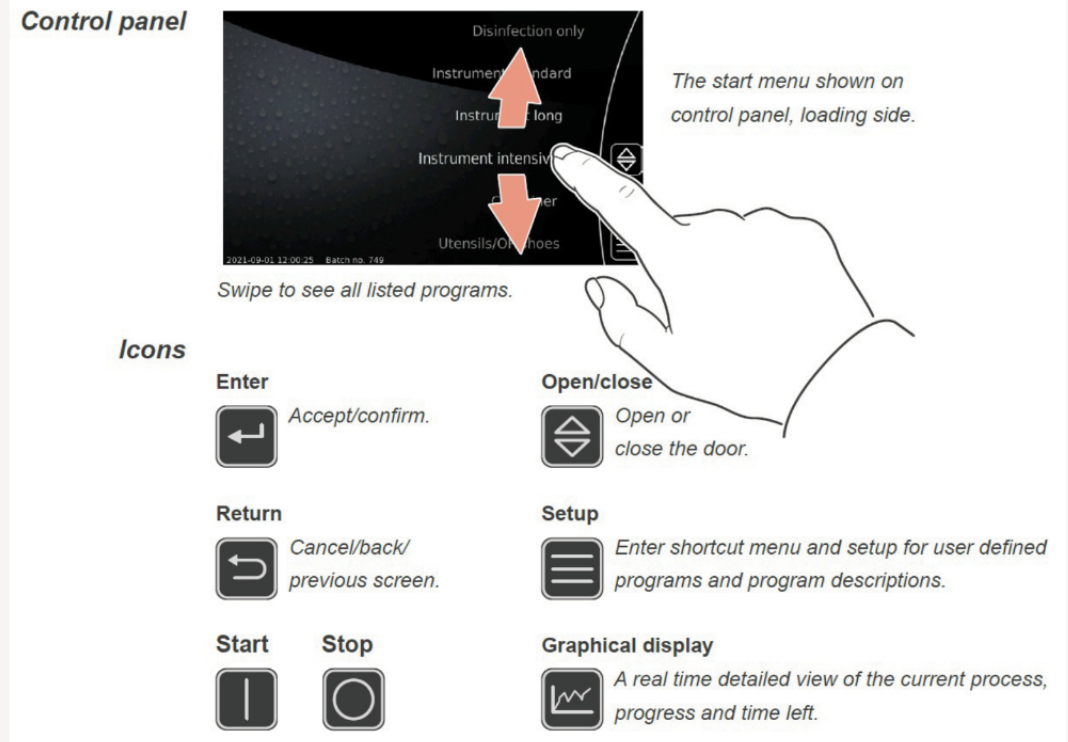
## 4. IQ10-LW

- H: 2790 mm
- W: 2940 mm
- L: 3520 mm



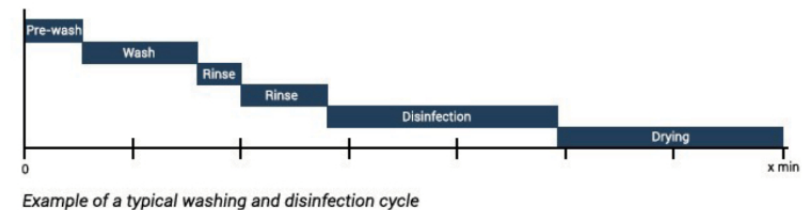
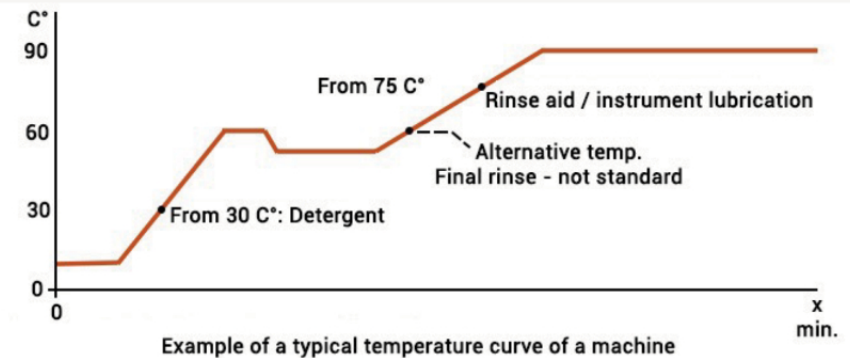
# Control Unit

- Integrated 7-inch multi-touch screen
- Intuitive and user-friendly
- Up to 40 programs with an open and unlimited configuration structure
- Control of all parameters and processes
- Network connected through an integrated Ethernet socket
- Dual independent microprocessor ensures cleaning, disinfection and drying of materials



# Cycle

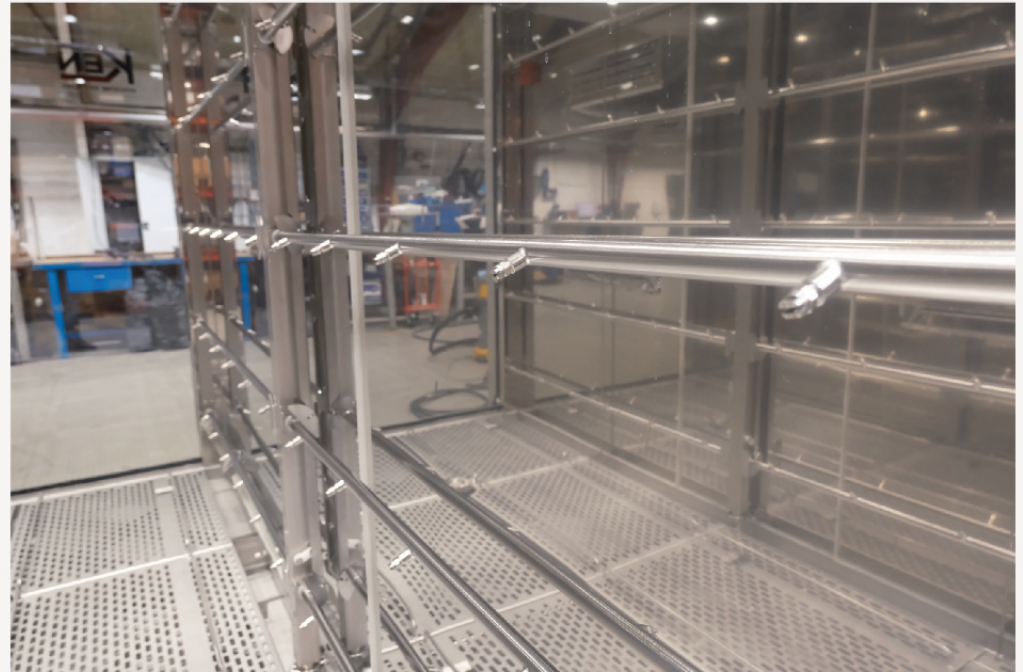
- 40 programmable programs
- Each program can consist of up to 10 phases:
  - Prewash
  - Wash
  - Rinse
  - Disinfection (A0)
  - Disinfection (Temperature / Time)
  - Drying (Option)
- The configuration of cycles and their phases can be adapted to items or materials being washed





# Washing and Drying

- Performs automatic control of the washing pressure to guarantee optimal mechanical force of the water
- High pressure recirculation pump facilitates complete water drainage between each cycle
- Spray nozzles and spray arms in stainless steel to ensure long durability
- Low water consumption
- Two powerful high yielding blowers
- Build in high efficiency particle filter (HEPA) class



# Technical Specifications

- **Storage tank capacity:**

130 litres

- **Water consumption per phase:**

70 – 125 litres depending on load and phases

- **Heating element**

Drying unit: Electrical 32 kW (480 V) or 24 kW (208 V) or steam

Store tank: Electrical 24 kW (480 V) or 18 kW (208 V) or steam

Water heater: Electrical 72 kW (480 V) or 36 kW (208 V) or steam

- **Compressed air, pneumatic valves:**

Pressure: 500-700 kPa

- **Exhaust connection point:**

Ø250 mm 1000 m<sup>3</sup>/h

- **Water connection:**

Tank 1 (Cold or Demin./RO water 5-30°C): 2 x 3/4", pressure 200-800 kPa, ≥ 15 l/min.

Tank 2 (Cold or Demin./RO water 5-30°C): 2 x 3/4", pressure 200-800 kPa, ≥ 15 l/min.

Tank 3 (Cold or Demin./RO water 5-30°C): 1 x 3/4", pressure 200-800 kPa, ≥ 15 l/min.

Cold water: temp. 5-30°C, hardness 0-30° dH.

Demineralized/RO water: 5-70°C, conductivity 3-200 µS/cm

- **Power supply:**

Electrical heated: 400V / 415V 3N ~+PE 50 Hz 76 kW

Electrical heated for US: 208V 3 ~+PE 60 Hz 40 kW. / 480V 3N ~+PE 60 Hz 76kW

Steam heated: 400V / 415V 3N ~+PE 50 Hz 16 kW

Steam heated for US: 208V 3 ~+PE 60 Hz 13 kW / 480V 3N ~+PE 60 Hz 13kW

- **Drain:**

Ø110, minimum flow requirements: 250 L/min

- **Blower, drying unit**

2 x 6.3 kW, 50/60 Hz

- **Sound effect LWA:**

<70 dB(A)