

KEN BWD 731

Bedpan Washer-disinfector for hospitals, nursing homes, and private clinics



Simple front operation

Total disinfecting system

Complies with ISO 15883

For more information consult – www.ken.dk

Exceptional advantages for users and technicians



BWD 731 has specially been developed for hospitals, nursing homes, private clinics, etc. where there is a need for washing bedpans, urine bottles, etc. The machine is also suitable for isolation rooms installed in the adjacent shower room when IP44 protected (Option). When focus is on quality, flexibility and user-friendly advantages, KEN BWD 731 can be

hung on a wall, mounted on the floor on a base, or be supplied as an under-counter model. The washing chamber can take 1 bedpan or 2 urine bottles, as an example. The computer-monitored washing process and the rotating washing heads ensure a high quality and always uniform result.



Easy-to-read display

NetCom

Door acts like a slop sink

Combitank (Patented)

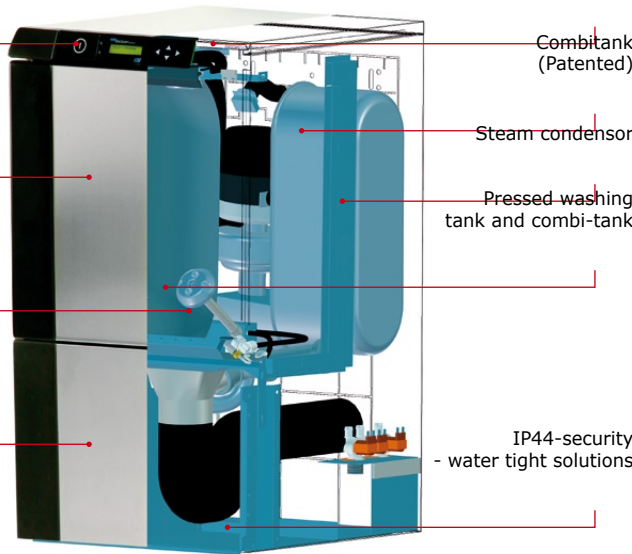
Total disinfection

Steam condensor

Detergent storage room

Pressed washing tank and combi-tank

IP44-security - water tight solutions



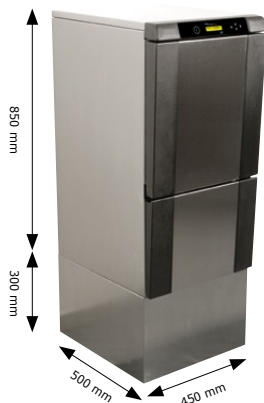
Service

All KEN machines conform to present EU Directives, and all hospital machines have been constructed in accordance with EN ISO 15883, including, for example, the testing of its cleaning capacity according to SIS-TR 3:2001 (formerly SPRI).

Contact your local KEN distributor to make sure you have the correct service for your machines. The right service will prolong the machine's working life.

Advantages:

- Easy-to-read display with programme info
- 5 programmes as standard. Option for individual modification
- Total disinfection of nozzles, wash heads, tubes, combitank and pump after the washing. Combats bacterial growth and maintains hygiene (patented)
- Quick-start – automatic closing of door and automatic programme start
- Door as slopsink. The bedpan is emptied automatically, but only once the door is closed.
- KEN NetCom – communication via network with central or decentral computer for documentation.



Accessories

Look for equipment with the aid of the equipment selector at www.ken.dk, or contact KEN for information about further possible equipment, including customized special solutions.

Contact a KEN specialist

Malone Hospital Service Pty Ltd.
24. Tathra Street
West Gosford 2250, NSW
Phone.: +61 (02) 4323 9731
e-mail: sales@malones.com.au
Internet: www.malones.com.au

Specifications

Power connection (standard)	3N~400V, 50Hz or multiple choices
Connected load/initial fuse	9kW/16A alternatively 6kW/10A
Water connection	Cold untreated water: 1 pcs., 3/4" RG, 5-30°C, 0-3°dH
Water connection	Hot soft water: 1 pcs., 3/4" RG, 30-70°C, 0-3°dH
Water pressure	200-800 kPa
Outlet	Ø 90 mm P/S, wall or floor (to be specified)
Water consumption	
Rinsing programme	1 wash phase, 7 l
Urine bottle programme	2 wash phases, 14 l
Bedpan programme medium	3 wash phases, 21 l
Bedpan programme long	5 wash phases, 35 l
Wash basin programme	3 wash phases, 21 l
Detergent pump	Standard
Built-in detergent compartment	Room for 1 pcs. 5 l container
Pump capacity	298 l/min. , 0,75kW
Dimensions wash chamber H x W x D	460 x 380 x 280 mm
Noise level	62.5 dB(A) (sound pressure)
Sealing class	Standard: IP 21 (not scavenging-proof). Extra: IP 44



We make a difference – both locally and globally

